



# MONTHLY MEMBERSHIP PROGRESS REPORT

District 3232F1

Results as of: 05/31/2019

GMT: JAYESH THAKKAR

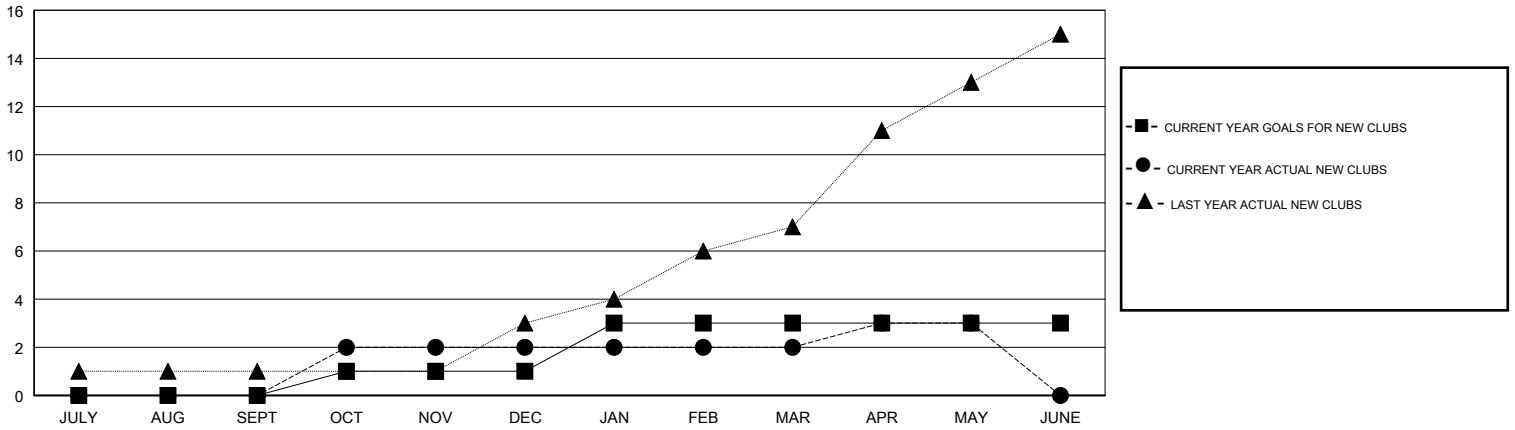
LOCATION INDIA

GMT CA

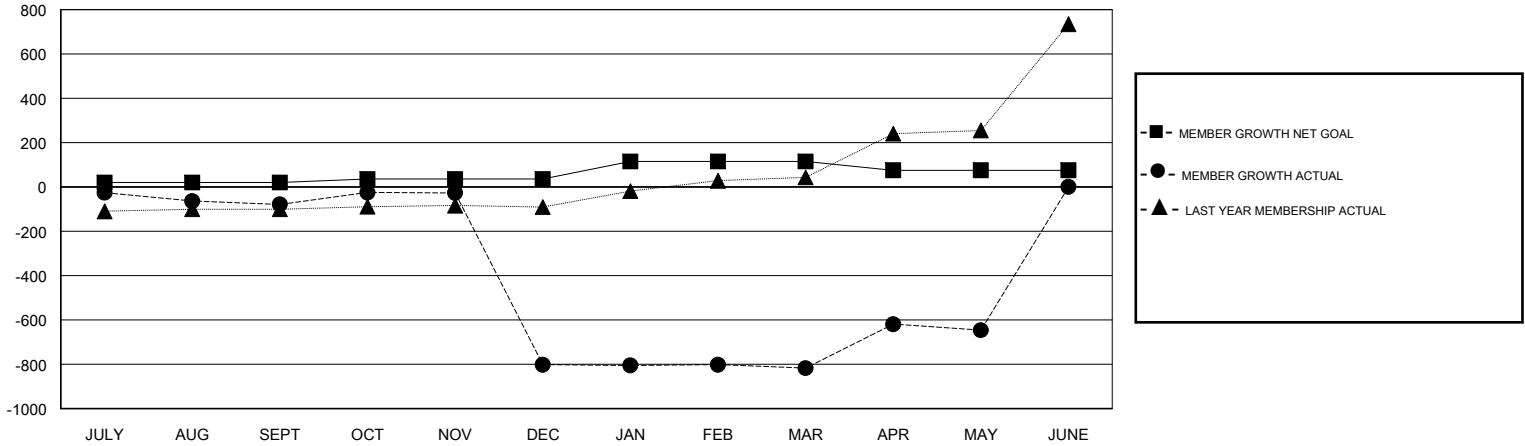
Clubs			
RESULTS FOR 2018-2019			
QUARTER	NEW CLUB GOAL	NEW CLUBS	DROPPED CLUBS
JULY/AUG/SEPT	0	0	1
OCT/NOV/DEC	1	2	10
JAN/FEB/MAR	2	0	0
APR/MAY/JUNE	0	1	0

Members			
RESULTS FOR 2018-2019			
QUARTER	MEMBER GROWTH NET GOAL	MEMBER GROWTH ACTUAL	DROPPED MEMBERS ACTUAL (including transfers)
JULY/AUG/SEPT	20	25	98
OCT/NOV/DEC	15	119	822
JAN/FEB/MAR	80	27	38
APR/MAY/JUNE	-40	228	55

GOALS AND ACTUAL NEW CLUBS CUMULATIVE



GOALS AND ACTUAL MEMBERS CUMULATIVE



DROPPED CLUBS: 11	40 CLUBS OF 93 ADDED 1 OR MORE NEW MEMBERS	<u>GENDER DISTRIBUTION</u> MALE 1,894 (66.53%) FEMALE 953 (33.47%) Women Percentage Fiscal Year Goal: 40%
<u>DROPPED MEMBERS</u> DECEASED 7 CLUB CANCELLED 715 OTHER 291 TOTAL 1,013	<a href="#">CLICK HERE FOR CUMULATIVE MEMBERSHIP DATA</a>	TOTAL FAMILY UNIT MEMBERS 1,394 FAMILY MEMBERS PAYING HALF DUES 767